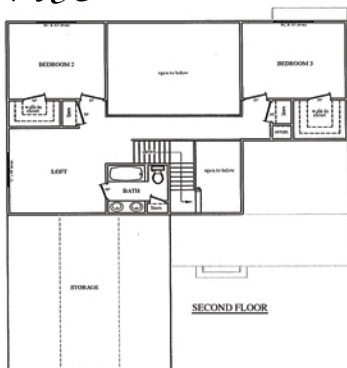




www.ciderridge.net



The Doral



DORAL -

Spacious 3 bedroom, 2.5 bath home. Main level includes oversized Formal Dining with crown molding, Family room with soaring ceilings and can lights, Kitchen with custom cabinets, granite tops, breakfast area, and stainless appliances. Master suite on main level with walk in closet, jetted tub, and separate shower. Upstairs offers 2 large bedrooms, 1 full bath, and a loft/study. Hallway with beautiful overlook to Family room. Unfinished attic storage and bonus room also available. Full brick exterior offers covered front porch, as well as covered rear patio.

Rendering(s) shown are based on the "Hamilton" elevation and are artist's conception; note that plans vary by community. Consult blueprints for actual dimensions and specific details. Continuing a policy of constant research and improvement, builder reserves the right of price, plan or specification change without notice or prior obligation.