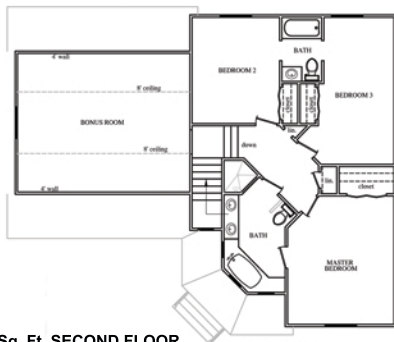
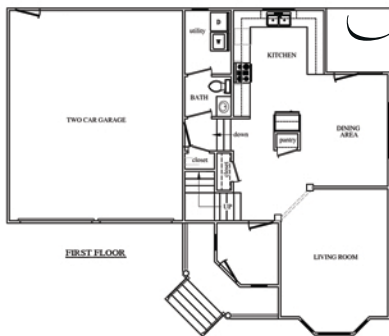




[www.ciderridge.net](http://www.ciderridge.net)



## *The Congressional*



1,068 Sq. Ft. SECOND FLOOR  
875 Sq. Ft. FIRST FLOOR  
**1,963 TOTAL Sq. Ft.**

### Congressional -

Gorgeous front elevation featuring castle and bay windows in this 3 bedroom, 2.5 bath home. Main level features Large Family room and spacious and open Kitchen with granite tops, custom cabinets, and good sized Dining area. All bedroom are upstairs to include the Master suite, which includes walk in closet, jetted tub, granite tops, and separate. The alternate bedrooms share a jack in jill bath and there is an option to finish the bonus room, or use for great storage. The Brick exterior offers covered front porch and rear patio.

Rendering(s) shown are based on the "Hamilton" elevation and are artist's conception; note that plans vary by community. Consult blueprints for actual dimensions and specific details. Continuing a policy of constant research and improvement, builder reserves the right of price, plan or specification change without notice or prior obligation.